

Southern Nevada during the Pleistocene

(~2.6 Million Years Ago to ~10 Thousand Years Ago)

Climate

- Wetter and cooler than today; but probably not cool enough for snow
- Abundant water springs
- Mix of semi-desert and pinyon-juniper woodland

Flora

- Mostly pinyon pine and juniper with some sagebrush
- Joshua tree present in some areas

Pinyon pine



Sagebrush



Juniper



Joshua tree



Fauna

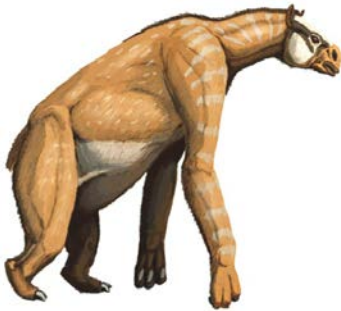
Camelops (extinct 9-foot tall camel)



Bison latifrons



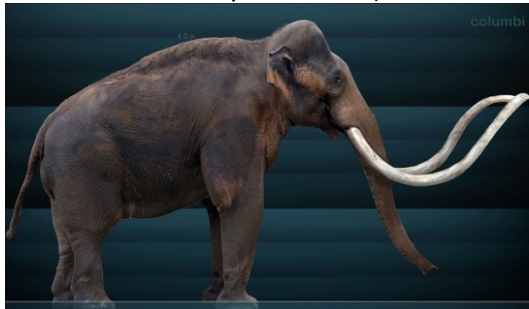
Giant Ground sloth (too big to be in trees)



Dire wolf



Columbian Mammoth (larger, hairless cousin to the woolly mammoth)



American lion



Ancient, miniature horses



Resources

National Park Service Fossil

Day http://nature.nps.gov/geology/nationalfossilday/mammoth_tule_springs.cfm

<http://www.nps.gov/tusk/index.htm>

Protectors of Tule Springs

<http://www.tulespringslv.com/IceAgeFossils.aspx>

UNLV

<https://www.unlv.edu/news/release/unlv-researchers-find-first-evidence-ice-age-wolves-nevada>

Las Vegas Sun

<http://lasvegassun.com/news/2014/jul/20/giants-our-backyard/>