

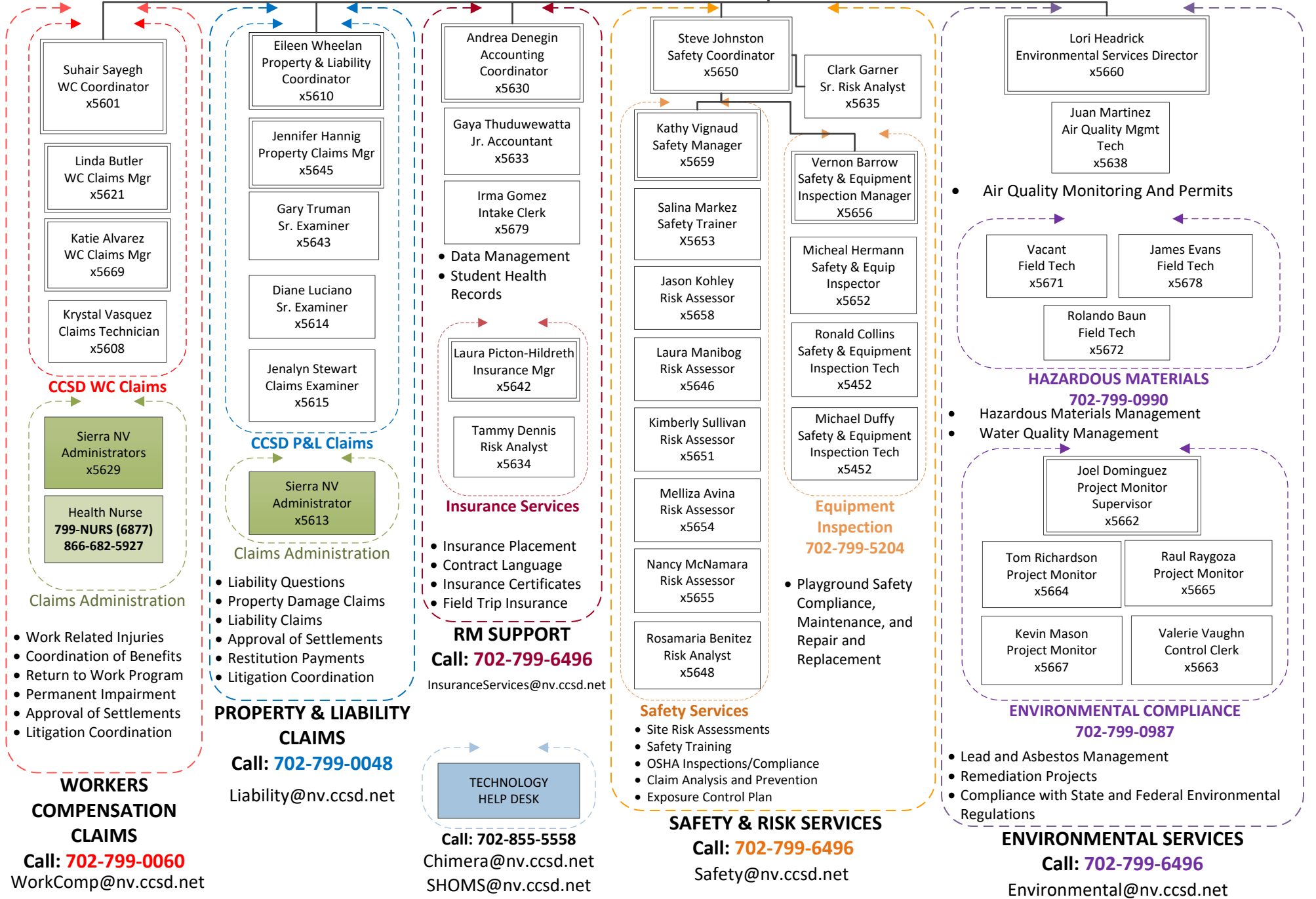
Risk and Environmental Services Department

RiskManagement@nv.ccsd.net

Kimberly Krumland
Director III
x5690

Karla Cross
Administrative Secretary
x5692

09/13/19



CCSD WC Claims

CCSD P&L Claims

Insurance Services

Equipment Inspection 702-799-5204

HAZARDOUS MATERIALS 702-799-0990

ENVIRONMENTAL COMPLIANCE 702-799-0987

WORKERS COMPENSATION CLAIMS
Call: 702-799-0060
WorkComp@nv.ccsd.net

PROPERTY & LIABILITY CLAIMS
Call: 702-799-0048
Liability@nv.ccsd.net

Call: 702-855-5558
Chimera@nv.ccsd.net
SHOMS@nv.ccsd.net

SAFETY & RISK SERVICES
Call: 702-799-6496
Safety@nv.ccsd.net

ENVIRONMENTAL SERVICES
Call: 702-799-6496
Environmental@nv.ccsd.net

- Work Related Injuries
- Coordination of Benefits
- Return to Work Program
- Permanent Impairment
- Approval of Settlements
- Litigation Coordination

- Claims Administration**
- Liability Questions
 - Property Damage Claims
 - Liability Claims
 - Approval of Settlements
 - Restitution Payments
 - Litigation Coordination

- Insurance Placement
- Contract Language
- Insurance Certificates
- Field Trip Insurance

- Playground Safety Compliance, Maintenance, and Repair and Replacement

- Hazardous Materials Management
- Water Quality Management

- Lead and Asbestos Management
- Remediation Projects
- Compliance with State and Federal Environmental Regulations

- Data Management
- Student Health Records

- Safety Services**
- Site Risk Assessments
 - Safety Training
 - OSHA Inspections/Compliance
 - Claim Analysis and Prevention
 - Exposure Control Plan