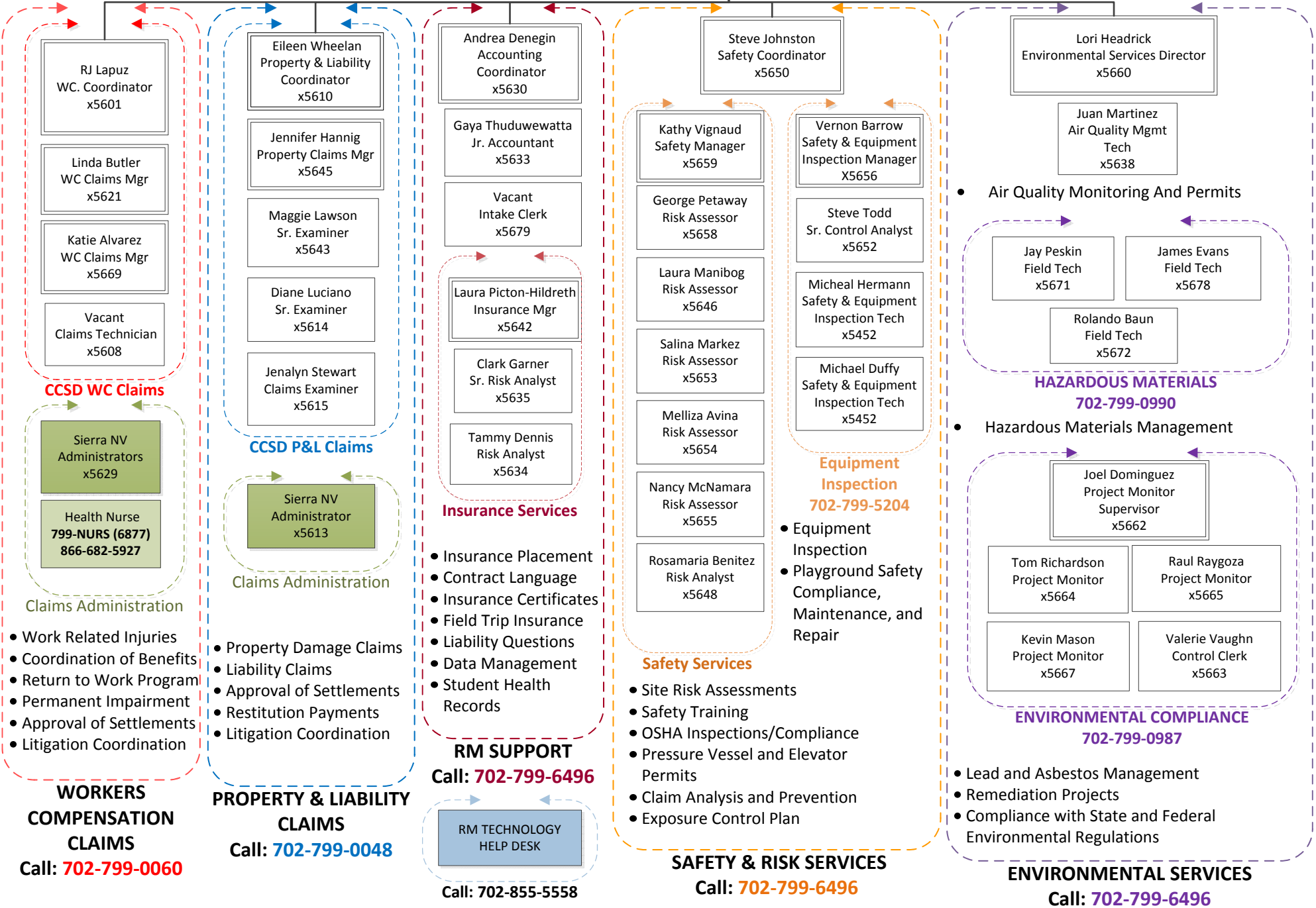


Risk and Environmental Services Department

Kimberly Krumland
Director III
x5690

Karla Cross
Administrative Secretary
x5692

10/26/2017



CCSD WC Claims

CCSD P&L Claims

Insurance Services

Equipment Inspection 702-799-5204

HAZARDOUS MATERIALS 702-799-0990

ENVIRONMENTAL COMPLIANCE 702-799-0987

Safety Services

SAFETY & RISK SERVICES

ENVIRONMENTAL SERVICES

- Work Related Injuries
- Coordination of Benefits
- Return to Work Program
- Permanent Impairment
- Approval of Settlements
- Litigation Coordination

- Property Damage Claims
- Liability Claims
- Approval of Settlements
- Restitution Payments
- Litigation Coordination

- Insurance Placement
- Contract Language
- Insurance Certificates
- Field Trip Insurance
- Liability Questions
- Data Management
- Student Health Records

- Equipment Inspection
- Playground Safety Compliance, Maintenance, and Repair

- Site Risk Assessments
- Safety Training
- OSHA Inspections/Compliance
- Pressure Vessel and Elevator Permits
- Claim Analysis and Prevention
- Exposure Control Plan

- Lead and Asbestos Management
- Remediation Projects
- Compliance with State and Federal Environmental Regulations

WORKERS COMPENSATION CLAIMS
Call: 702-799-0060

PROPERTY & LIABILITY CLAIMS
Call: 702-799-0048

RM SUPPORT
Call: 702-799-6496

RM TECHNOLOGY HELP DESK
Call: 702-855-5558

Call: 702-799-6496

Call: 702-799-6496